

Arundel Parish

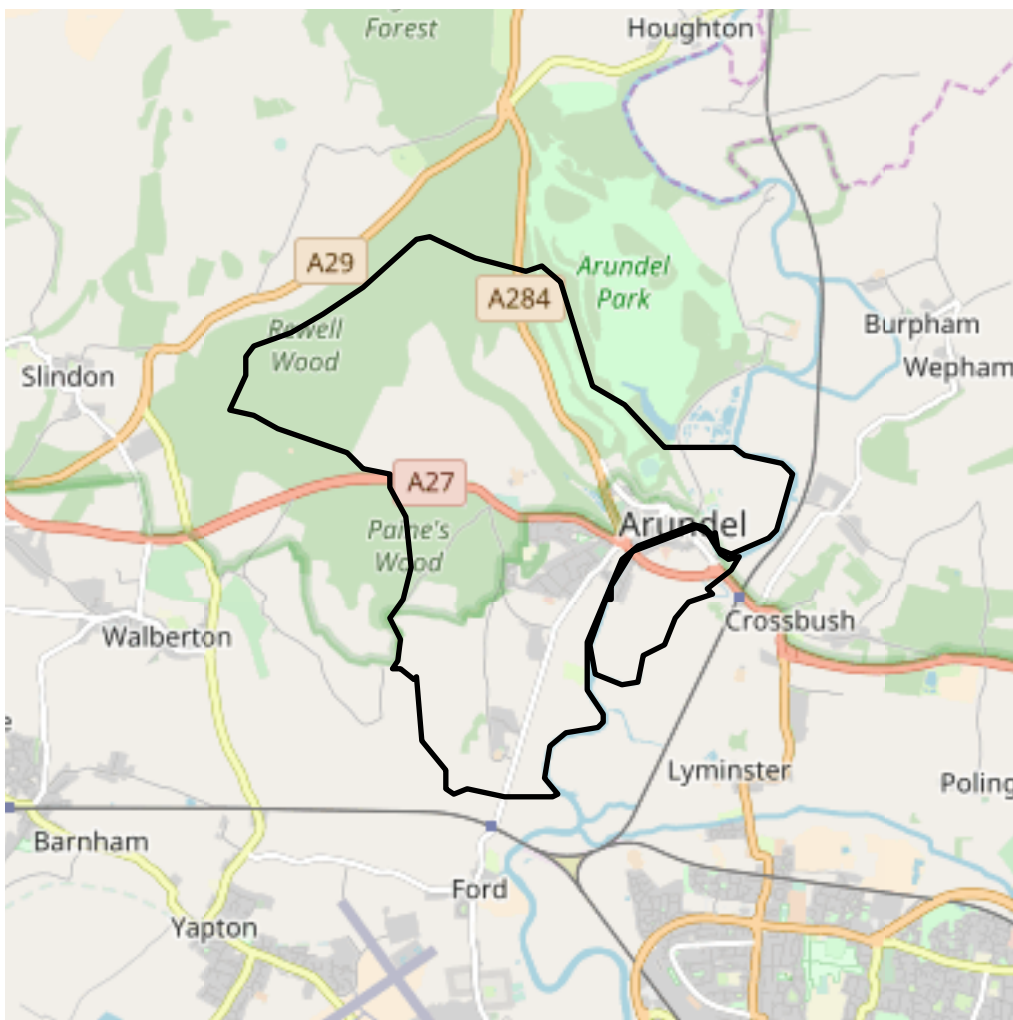
Local Area Report

Summary

This report covers the characteristics of people and households in Arundel Parish in Arun (GSS code E04009852). Figures are sourced from the 2011 Census key statistics.

There were 3,475 usual residents as at Census day 2011. Of these, 99.2% lived in households and 0.8% lived in communal establishments. The average (mean) age of residents was 47.2 years.

In total there were 1,855 household spaces. Of these, 1,690 (91.1%) had at least one usual resident and 165 (8.9%) had no usual residents.



Contents

Who we are

Information about the personal characteristics of people who usually live in an area including: Resident population, Age, Marital status, Living arrangements, Ethnic group, National identity, Country of birth, Passports held, Household language, Religion and Unpaid care.

How we live

The characteristics of the households we live in including: Number of households and type of accommodation, Whether owned or rented, Number of rooms and central heating, Number of cars, Household composition, Households with no adults in employment, Lone parent households and Communal establishments.

What we do

This section covers work-related topics including: Number of people in employment and unemployed, Qualifications and students, Hours worked, and the Industries and Occupations we work in.

Definitions

Who we are

Usual resident population

	Persons	
	Arundel Parish	
	count	%
All usual residents	3,475	100.0
Males	1,665	47.9
Females	1,810	52.1
Lives in a household	3,447	99.2
Lives in a communal establishment	28	0.8
Schoolchild or full-time student aged 4 and over at their non term-time address	43	-
Area (Hectares)	1,214.35	-
Density (number of persons per hectare)	2.9	-

- These figures are missing.

Source: ONS - 2011 Census (KS101EW)

In order to protect against disclosure of personal information, records have been swapped between different geographic areas. Some counts will be affected, particularly small counts at the lowest geographies

Age structure

	Persons	
	Arundel Parish	
	count	%
All usual residents	3,475	100.0
Age 0 to 4	146	4.2
Age 5 to 7	104	3.0
Age 8 to 9	73	2.1
Age 10 to 14	156	4.5
Age 15	26	0.7
Age 16 to 17	66	1.9
Age 18 to 19	51	1.5
Age 20 to 24	112	3.2
Age 25 to 29	118	3.4
Age 30 to 44	619	17.8
Age 45 to 59	774	22.3
Age 60 to 64	328	9.4
Age 65 to 74	430	12.4
Age 75 to 84	336	9.7
Age 85 to 89	100	2.9
Age 90 and over	36	1.0
Mean Age	47.2	-
Median Age	49	-

- These figures are missing. Source: ONS - 2011 Census (KS102EW)

In order to protect against disclosure of personal information, records have been swapped between different geographic areas. Some counts will be affected, particularly small counts at the lowest geographies

Marital and civil partnership status

	Persons	
	Arundel Parish	
	count	%
All usual residents aged 16+	2,970	100.0
Single (never married or never registered a same-sex civil partnership)	761	25.6
Married	1,473	49.6
In a registered same-sex civil partnership	10	0.3
Separated (but still legally married or still legally in a same-sex civil partnership)	74	2.5
Divorced or formerly in a same-sex civil partnership which is now legally dissolved	366	12.3
Widowed or surviving partner from a same-sex civil partnership	286	9.6

In order to protect against disclosure of personal information, records have been swapped between different geographic areas. Some counts will be affected, particularly small counts at the lowest geographies

Source: ONS - 2011 Census (KS103EW)

Living arrangements

	Persons	
	Arundel Parish	
	count	%
All usual residents aged 16 and over in households	2,942	100.0
Living in a couple	1,751	59.5
Married or in a registered same-sex civil partnership	1,428	48.5
Cohabiting	323	11.0
Not living in a couple	1,191	40.5
Single (never married or never registered a same-sex civil partnership)	563	19.1
Married or in a registered same-sex civil partnership	45	1.5
Separated (but still legally married or still legally in a same-sex civil partnership)	58	2.0
Divorced or formerly in a same-sex civil partnership which is now legally dissolved	261	8.9
Widowed or surviving partner from a same-sex civil partnership	264	9.0

In order to protect against disclosure of personal information, records have been swapped between different geographic areas. Some counts will be affected, particularly small counts at the lowest geographies

Source: ONS - 2011 Census (KS104EW)

Ethnic group

	Persons	
	Arundel Parish	
	count	%
All usual residents	3,475	100.0
White	3,419	98.4
English/Welsh/Scottish/Northern Irish/British	3,289	94.6
Irish	25	0.7
Gypsy or Irish Traveller	0	0.0
Other White	105	3.0
Mixed/multiple ethnic groups	20	0.6
White and Black Caribbean	6	0.2
White and Black African	8	0.2
White and Asian	3	0.1
Other Mixed	3	0.1
Asian/Asian British	25	0.7
Indian	1	0.0
Pakistani	0	0.0
Bangladeshi	0	0.0
Chinese	14	0.4
Other Asian	10	0.3
Black/African/Caribbean/Black British	10	0.3
African	5	0.1
Caribbean	2	0.1
Other Black	3	0.1
Other ethnic group	1	0.0
Arab	1	0.0
Any other ethnic group	0	0.0

In order to protect against disclosure of personal information, records have been swapped between different geographic areas. Some counts will be affected, particularly small counts at the lowest geographies

Source: ONS - 2011 Census (KS201EW)

National identity

	Persons	
	Arundel Parish	
	count	%
All usual residents	3,475	100.0
English only identity	2,252	64.8
English and British only identity	404	11.6
Other English combined background identity	33	0.9
No English identity	786	22.6
Welsh only identity	17	0.5
Welsh and British only identity	4	0.1
Other Welsh combined background identity	7	0.2
No Welsh identity	3,447	99.2
Scottish only identity	41	1.2
Scottish and British only identity	18	0.5
Other Scottish combined background identity	9	0.3
No Scottish identity	3,407	98.0
Northern Irish only identity	9	0.3
Northern Irish and British only identity	1	0.0
Other Northern Irish combined background identity	2	0.1
No Northern Irish identity	3,463	99.7
British only identity	563	16.2
British and any other identity	457	13.2
No British identity	2,455	70.6
Cornish only identity	0	0.0
Cornish and British only identity	0	0.0
Cornish and at least one of English/Welsh/Scottish/Northern Irish identities (with or without British)	0	0.0
No Cornish identity	3,475	100.0
Irish only identity	19	0.5
Irish and British only identity	0	0.0
Irish and Northern Irish only identity	0	0.0
Irish, Northern Irish and British only identity	0	0.0
Irish and at least one of English/Welsh/Scottish identities (with or without British)	2	0.1
Irish, Northern Irish and at least one of English/Welsh/Scottish identities (with or without British)	0	0.0
No Irish identity	3,454	99.4
Other identities only	120	3.5
Other identities and at least one of	32	0.9

English/Welsh/Scottish/Northern Irish/British only

At least one of English/Welsh/Scottish/Northern Irish/British identities only

3,323

95.6

In order to protect against disclosure of personal information, records have been swapped between different geographic areas. Some counts will be affected, particularly small counts at the lowest geographies

Source: ONS - 2011 Census (KS202EW)

Country of birth

	Persons	
	Arundel Parish	
	count	%
All usual residents	3,475	100.0
United Kingdom	3,191	91.8
England	3,065	88.2
Northern Ireland	21	0.6
Scotland	72	2.1
Wales	32	0.9
United Kingdom not otherwise specified	1	0.0
Ireland	26	0.7
Other EU	88	2.5
Member countries in March 2001	69	2.0
Accession countries April 2001 to March 2011	19	0.5
Other countries	170	4.9

In order to protect against disclosure of personal information, records have been swapped between different geographic areas. Some counts will be affected, particularly small counts at the lowest geographies

Source: ONS - 2011 Census (KS204EW)

Passports held

	Persons	
	Arundel Parish	
	count	%
All usual residents	3,475	100.0
No passport	401	11.5
United Kingdom	2,962	85.2
Republic of Ireland	22	0.6
Other Europe: EU countries	63	1.8
Other Europe: Non EU countries	11	0.3
Africa	5	0.1
Middle East and Asia	12	0.3
North America and the Caribbean	26	0.7
Central America	1	0.0
South America	3	0.1
Antarctica and Oceania	30	0.9
British Overseas Territories	1	0.0

In order to protect against disclosure of personal information, records have been swapped between different geographic areas. Some counts will be affected, particularly small counts at the lowest geographies

Source: ONS - 2011 Census (KS205EW)

Household language

Households

Arundel
Parish

	count	%
All households	1,690	100.0
All people aged 16 and over in household have English as a main language (English or Welsh in Wales)	1,643	97.2
At least one but not all people aged 16 and over in household have English as a main language (English or Welsh in Wales)	33	2.0
No people aged 16 and over in household but at least one person aged 3 to 15 has English as a main language (English or Welsh in Wales)	0	0.0
No people in household have English as a main language (English or Welsh in Wales)	14	0.8

In order to protect against disclosure of personal information, records have been swapped between different geographic areas. Some counts will be affected, particularly small counts at the lowest geographies

Source: ONS - 2011 Census (KS206EW)

Religion

Persons

Arundel
Parish

	count	%
All usual residents	3,475	100.0
Has religion	2,377	68.4
Christian	2,311	66.5
Buddhist	25	0.7
Hindu	5	0.1
Jewish	12	0.3
Muslim	7	0.2
Sikh	0	0.0
Other religion	17	0.5
No religion	833	24.0
Religion not stated	265	7.6

In order to protect against disclosure of personal information, records have been swapped between different geographic areas. Some counts will be affected, particularly small counts at the lowest geographies

Source: ONS - 2011 Census (KS209EW)

The voluntary question on religion in the 2011 Census was intended to capture people's religious affiliation and identification at the time of the Census irrespective of whether they practised or believed in that religion or how important it was in their lives. If a person had no religion then the first of a series of tick boxes could be selected. Care should be taken when using these data not to infer, or allow the inference by others, that the practice of a religion or specific religious activities that are expected of believers has been measured. Unlike other census questions where missing answers are imputed, this question was voluntary, and where no answer was provided the response is categorised as 'not stated'.

Due to an error in the processing of census data, the number of usual residents in the 'Religion not stated' category has been overestimated by a total of 62,000 for three local authorities: Camden, Islington and Tower Hamlets. More information from <http://www.ons.gov.uk/ons/guide-method/census/2011/census-data/census-products--issues-and-corrections/index.html> (opens in new window)

Health and provision of unpaid Care

	Persons	
	Arundel Parish	
	count	%
All usual residents	3,475	100.0
Day-to-day activities limited a lot	226	6.5
Day-to-day activities limited a little	399	11.5
Day-to-day activities not limited	2,850	82.0
Day-to-day activities limited a lot: Age 16 to 64	84	2.4
Day-to-day activities limited a little: Age 16 to 64	139	4.0
Day-to-day activities not limited: Age 16 to 64	1,845	53.1
Very good health	1,670	48.1
Good health	1,192	34.3
Fair health	459	13.2
Bad health	125	3.6
Very bad health	29	0.8
Provides no unpaid care	3,089	88.9
Provides 1 to 19 hours unpaid care a week	291	8.4
Provides 20 to 49 hours unpaid care a week	36	1.0
Provides 50 or more hours unpaid care a week	59	1.7

In order to protect against disclosure of personal information, records have been swapped between different geographic areas. Some counts will be affected, particularly small counts at the lowest geographies

Source: ONS - 2011 Census (KS301EW)

Dwellings, household spaces and accommodation type

Household spaces, Dwellings

	Arundel Parish	
	count	%
All dwelling types	1,854	100.0
Unshared dwelling	1,853	99.9
Shared dwelling: Two household spaces	1	0.1
Shared dwelling: Three or more household spaces	0	0.0
All household spaces	1,855	100.0
Household spaces with at least one usual resident	1,690	91.1
Household spaces with no usual residents	165	8.9
Whole house or bungalow: Detached	321	17.3
Whole house or bungalow: Semi-detached	476	25.7
Whole house or bungalow: Terraced (including end-terrace)	615	33.2
Flat, maisonette or apartment: Purpose-built block of flats or tenement	306	16.5
Flat, maisonette or apartment: Part of a converted or shared house (including bed-sits)	81	4.4
Flat, maisonette or apartment: In a commercial building	55	3.0
Caravan or other mobile or temporary structure	1	0.1

In order to protect against disclosure of personal information, records have been swapped between different geographic areas. Some counts will be affected, particularly small counts at the lowest geographies

Source: ONS - 2011 Census (KS401EW)

Tenure

	Households	
	Arundel Parish	
	count	%
All households	1,690	100.0
Owned	1,179	69.8
Owned outright	709	42.0
Owned with a mortgage or loan	470	27.8
Shared ownership (part owned and part rented)	3	0.2
Social rented	186	11.0
Rented from council (Local Authority)	114	6.7
Other	72	4.3
Private rented	268	15.9
Private landlord or letting agency	241	14.3
Other	27	1.6
Living rent free	54	3.2

In order to protect against disclosure of personal information, records have been swapped between different geographic areas. Some counts will be affected, particularly small counts at the lowest geographies

Source: ONS - 2011 Census (KS402EW)

Rooms, bedrooms and central heating

	Households	
	Arundel Parish	
	count	%
All households	1,690	100.0
Does not have central heating	56	3.3
Does have central heating	1,634	96.7
Occupancy rating (rooms) of -1 or less	89	5.3
Occupancy rating (bedrooms) of -1 or less	32	1.9
Average household size	2	-
Average number of rooms per household	5.4	-
Average number of bedrooms per household	2.7	-

- These figures are missing.

Source: ONS - 2011 Census (KS403EW)

In order to protect against disclosure of personal information, records have been swapped between different geographic areas. Some counts will be affected, particularly small counts at the lowest geographies

Car or van availability

Households

Arundel
Parish

	count	%
All households	1,690	100.0
No cars or vans in household	256	15.1
1 car or van in household	816	48.3
2 cars or vans in household	489	28.9
3 cars or vans in household	87	5.1
4 or more cars or vans in household	42	2.5
sum of all cars or vans in the area	2,233	-

- These figures are missing.

Source: ONS - 2011 Census (KS404EW)

In order to protect against disclosure of personal information, records have been swapped between different geographic areas. Some counts will be affected, particularly small counts at the lowest geographies

Household composition

	Households	
		Arundel Parish
	count	%
All households	1,690	100.0
One person household	640	37.9
Aged 65 and over	324	19.2
Other	316	18.7
One family household	956	56.6
All aged 65 and over	191	11.3
Married or same-sex civil partnership couple	509	30.1
No children	241	14.3
Dependent children	199	11.8
All children non-dependent	69	4.1
Cohabiting couple	135	8.0
No children	95	5.6
Dependent children	37	2.2
All children non-dependent	3	0.2
Lone parent	121	7.2
Dependent children	79	4.7
All children non-dependent	42	2.5
Other household types	94	5.6
With dependent children	26	1.5
All full-time students	0	0.0
All aged 65 and over	3	0.2
Other	65	3.8

In order to protect against disclosure of personal information, records have been swapped between different geographic areas. Some counts will be affected, particularly small counts at the lowest geographies

Source: ONS - 2011 Census (KS105EW)

Adults not in employment and dependent children and persons with long-term health problems or disability for all households

Households

	Arundel Parish	
	count	%
All households	1,690	100.0
No adults in employment in household	653	38.6
With dependent children	35	2.1
No dependent children	618	36.6
Dependent children in household: All ages	342	20.2
Age 0 to 4	122	7.2
One person in household with a long-term health problem or disability	427	25.3
With dependent children	53	3.1
No dependent children	374	22.1

In order to protect against disclosure of personal information, records have been swapped between different geographic areas. Some counts will be affected, particularly small counts at the lowest geographies

Source: ONS - 2011 Census (KS106EW)

Lone parent households with dependent children

Households

Arundel
Parish

	count	%
All lone parent households with dependent children	79	100.0
Lone parent in part-time employment: Total	33	41.8
Lone parent in full-time employment: Total	16	20.3
Lone parent not in employment: Total	30	38.0
Male lone parent: Total	6	7.6
In part-time employment	1	1.3
In full-time employment	2	2.5
Not in employment	3	3.8
Female lone parent: Total	73	92.4
In part-time employment	32	40.5
In full-time employment	14	17.7
Not in employment	27	34.2

In order to protect against disclosure of personal information, records have been swapped between different geographic areas. Some counts will be affected, particularly small counts at the lowest geographies

Source: ONS - 2011 Census (KS107EW)

Communal establishment residents

Communal establishments, Persons

	Arundel Parish	
	count	%
All communal establishments	8	-
All usual residents living in communal establishments	28	100.0
Medical and care establishment: NHS: General hospital	0	0.0
Medical and care establishment: NHS: Mental health hospital/unit (including secure units)	0	0.0
Medical and care establishment: NHS: Other hospital	0	0.0
Medical and care establishment: Local Authority: Children's home (including secure units)	0	0.0
Medical and care establishment: Local Authority: Care home or other home	0	0.0
Medical and care establishment: Registered Social Landlord/Housing Association	0	0.0
Medical and care establishment: Other: Care home with nursing	0	0.0
Medical and care establishment: Other: Care home without nursing	19	67.9
Medical and care establishment: Other: Children's home (including secure units)	0	0.0
Medical and care establishment: Other	0	0.0
Other establishments	9	32.1
Establishment not stated	0	0.0

- These figures are missing.

Source: ONS - 2011 Census (KS405EW)

In order to protect against disclosure of personal information, records have been swapped between different geographic areas. Some counts will be affected, particularly small counts at the lowest geographies

What we do

Economic activity

	Persons	
	Arundel Parish	
	count	%
All usual residents aged 16 to 74	2,498	100.0
Economically active	1,770	70.9
In employment	1,655	66.3
Employee: Part-time	354	14.2
Employee: Full-time	835	33.4
Self-employed	466	18.7
Unemployed	55	2.2
Full-time student	60	2.4
Economically Inactive	728	29.1
Retired	480	19.2
Student (including full-time students)	66	2.6
Looking after home or family	73	2.9
Long-term sick or disabled	65	2.6
Other	44	1.8
Unemployed: Age 16 to 24	10	0.4
Unemployed: Age 50 to 74	17	0.7
Unemployed: Never worked	3	0.1
Long-term unemployed	21	0.8

In order to protect against disclosure of personal information, records have been swapped between different geographic areas.

Some counts will be affected, particularly small counts at the lowest geographies

Source: ONS - 2011 Census (KS601EW)

Economic activity - males

	Persons	
	Arundel Parish	
	count	%
All usual residents aged 16 to 74	1,212	100.0
Economically active	924	76.2
In employment	868	71.6
Employee: Part-time	59	4.9
Employee: Full-time	513	42.3
Self-employed	296	24.4
Unemployed	29	2.4
Full-time student	27	2.2
Economically Inactive	288	23.8
Retired	193	15.9
Student (including full-time students)	35	2.9
Looking after home or family	8	0.7
Long-term sick or disabled	34	2.8
Other	18	1.5
Unemployed: Age 16 to 24	5	0.4
Unemployed: Age 50 to 74	10	0.8
Unemployed: Never worked	2	0.2
Long-term unemployed	10	0.8

In order to protect against disclosure of personal information, records have been swapped between different geographic areas.

Some counts will be affected, particularly small counts at the lowest geographies

Source: ONS - 2011 Census (KS602EW)

Economic activity - females

	Persons	
	Arundel Parish	
	count	%
All usual residents aged 16 to 74	1,286	100.0
Economically active	846	65.8
In employment	787	61.2
Employee: Part-time	295	22.9
Employee: Full-time	322	25.0
Self-employed	170	13.2
Unemployed	26	2.0
Full-time student	33	2.6
Economically Inactive	440	34.2
Retired	287	22.3
Student (including full-time students)	31	2.4
Looking after home or family	65	5.1
Long-term sick or disabled	31	2.4
Other	26	2.0
Unemployed: Age 16 to 24	5	0.4
Unemployed: Age 50 to 74	7	0.5
Unemployed: Never worked	1	0.1
Long-term unemployed	11	0.9

In order to protect against disclosure of personal information, records have been swapped between different geographic areas.

Some counts will be affected, particularly small counts at the lowest geographies

Source: ONS - 2011 Census (KS603EW)

Qualifications and students

	Persons	
	Arundel Parish	
	count	%
All usual residents aged 16 and over	2,970	100.0
No qualifications	563	19.0
Level 1 qualifications	345	11.6
Level 2 qualifications	452	15.2
Apprenticeship	99	3.3
Level 3 qualifications	355	12.0
Level 4 qualifications and above	1,035	34.8
Other qualifications	121	4.1
Schoolchildren and full-time students: Age 16 to 17	58	2.0
Schoolchildren and full-time students: Age 18 and over	64	2.2
Full-time students: Age 18 to 74: Economically active: In employment	29	1.0
Full-time students: Age 18 to 74: Economically active: Unemployed	4	0.1
Full-time students: Age 18 to 74: Economically inactive	31	1.0

In order to protect against disclosure of personal information, records have been swapped between different geographic areas. Some counts will be affected, particularly small counts at the lowest geographies

Source: ONS - 2011 Census (KS501EW)

Hours worked

	Persons	
	Arundel Parish	
	count	%
All usual residents aged 16 to 74 in employment the week before the census	1,703	100.0
Part-time: 15 hours or less worked	181	10.6
Part-time: 16 to 30 hours worked	355	20.8
Full-time: 31 to 48 hours worked	867	50.9
Full-time: 49 or more hours worked	300	17.6
Males	886	52.0
Part-time: 15 hours or less worked	52	3.1
Part-time: 16 to 30 hours worked	87	5.1
Full-time: 31 to 48 hours worked	532	31.2
Full-time: 49 or more hours worked	215	12.6
Females	817	48.0
Part-time: 15 hours or less worked	129	7.6
Part-time: 16 to 30 hours worked	268	15.7
Full-time: 31 to 48 hours worked	335	19.7
Full-time: 49 or more hours worked	85	5.0

In order to protect against disclosure of personal information, records have been swapped between different geographic areas. Some counts will be affected, particularly small counts at the lowest geographies

Source: ONS - 2011 Census (KS604EW)

Industry

	Persons	
	Arundel Parish	
	count	%
All usual residents aged 16 to 74 in employment the week before the census	1,703	100.0
A Agriculture, forestry and fishing	25	1.5
B Mining and quarrying	2	0.1
C Manufacturing	116	6.8
D Electricity, gas, steam and air conditioning supply	8	0.5
E Water supply; sewerage, waste management and remediation activities	7	0.4
F Construction	136	8.0
G Wholesale and retail trade; repair of motor vehicles and motor cycles	242	14.2
H Transport and storage	72	4.2
I Accommodation and food service activities	132	7.8
J Information and communication	65	3.8
K Financial and insurance activities	49	2.9
L Real estate activities	33	1.9
M Professional, scientific and technical activities	155	9.1
N Administrative and support service activities	93	5.5
O Public administration and defence; compulsory social security	88	5.2
P Education	163	9.6
Q Human health and social work activities	202	11.9
R, S, T, U Other	115	6.8

In order to protect against disclosure of personal information, records have been swapped between different geographic areas. Some counts will be affected, particularly small counts at the lowest geographies

Source: ONS - 2011 Census (KS605EW)

Industry - males

	Persons	
	Arundel Parish	
	count	%
All usual residents aged 16 to 74 in employment the week before the census	886	100.0
A Agriculture, forestry and fishing	20	2.3
B Mining and quarrying	2	0.2
C Manufacturing	82	9.3
D Electricity, gas, steam and air conditioning supply	4	0.5
E Water supply; sewerage, waste management and remediation activities	6	0.7
F Construction	122	13.8
G Wholesale and retail trade; repair of motor vehicles and motor cycles	144	16.3
H Transport and storage	52	5.9
I Accommodation and food service activities	58	6.5
J Information and communication	39	4.4
K Financial and insurance activities	26	2.9
L Real estate activities	19	2.1
M Professional, scientific and technical activities	83	9.4
N Administrative and support service activities	54	6.1
O Public administration and defence; compulsory social security	38	4.3
P Education	45	5.1
Q Human health and social work activities	37	4.2
R, S, T, U Other	55	6.2

In order to protect against disclosure of personal information, records have been swapped between different geographic areas. Some counts will be affected, particularly small counts at the lowest geographies

Source: ONS - 2011 Census (KS606EW)

Industry - females

	Persons	
	Arundel Parish	
	count	%
All usual residents aged 16 to 74 in employment the week before the census	817	100.0
A Agriculture, forestry and fishing	5	0.6
B Mining and quarrying	0	0.0
C Manufacturing	34	4.2
D Electricity, gas, steam and air conditioning supply	4	0.5
E Water supply; sewerage, waste management and remediation activities	1	0.1
F Construction	14	1.7
G Wholesale and retail trade; repair of motor vehicles and motor cycles	98	12.0
H Transport and storage	20	2.4
I Accommodation and food service activities	74	9.1
J Information and communication	26	3.2
K Financial and insurance activities	23	2.8
L Real estate activities	14	1.7
M Professional, scientific and technical activities	72	8.8
N Administrative and support service activities	39	4.8
O Public administration and defence; compulsory social security	50	6.1
P Education	118	14.4
Q Human health and social work activities	165	20.2
R, S, T, U Other	60	7.3

In order to protect against disclosure of personal information, records have been swapped between different geographic areas. Some counts will be affected, particularly small counts at the lowest geographies

Source: ONS - 2011 Census (KS607EW)

Occupation

	Persons	
	Arundel Parish	
	count	%
All usual residents aged 16 to 74 in employment the week before the census	1,703	100.0
1. Managers, directors and senior officials	305	17.9
2. Professional occupations	329	19.3
3. Associate professional and technical occupations	221	13.0
4. Administrative and secretarial occupations	158	9.3
5. Skilled trades occupations	216	12.7
6. Caring, leisure and other service occupations	153	9.0
7. Sales and customer service occupations	94	5.5
8. Process plant and machine operatives	83	4.9
9. Elementary occupations	144	8.5

In order to protect against disclosure of personal information, records have been swapped between different geographic areas. Some counts will be affected, particularly small counts at the lowest geographies

Source: ONS - 2011 Census (KS608EW)

Occupation - males

	Persons	
	Arundel Parish	
	count	%
All usual residents aged 16 to 74 in employment the week before the census	886	100.0
1. Managers, directors and senior officials	174	19.6
2. Professional occupations	156	17.6
3. Associate professional and technical occupations	115	13.0
4. Administrative and secretarial occupations	26	2.9
5. Skilled trades occupations	189	21.3
6. Caring, leisure and other service occupations	38	4.3
7. Sales and customer service occupations	41	4.6
8. Process plant and machine operatives	76	8.6
9. Elementary occupations	71	8.0

In order to protect against disclosure of personal information, records have been swapped between different geographic areas. Some counts will be affected, particularly small counts at the lowest geographies

Source: ONS - 2011 Census (KS609EW)

Occupation - females

	Persons	
	Arundel Parish	
	count	%
All usual residents aged 16 to 74 in employment the week before the census	817	100.0
1. Managers, directors and senior officials	131	16.0
2. Professional occupations	173	21.2
3. Associate professional and technical occupations	106	13.0
4. Administrative and secretarial occupations	132	16.2
5. Skilled trades occupations	27	3.3
6. Caring, leisure and other service occupations	115	14.1
7. Sales and customer service occupations	53	6.5
8. Process plant and machine operatives	7	0.9
9. Elementary occupations	73	8.9

In order to protect against disclosure of personal information, records have been swapped between different geographic areas. Some counts will be affected, particularly small counts at the lowest geographies

Source: ONS - 2011 Census (KS610EW)

	Persons	
	Arundel Parish	
	count	%
All usual residents aged 16 to 74	2,498	100.0
1. Higher managerial, administrative and professional occupations	380	15.2
1.1 Large employers and higher managerial and administrative occupations	104	4.2
1.2 Higher professional occupations	276	11.0
2. Lower managerial, administrative and professional occupations	669	26.8
3. Intermediate occupations	281	11.2
4. Small employers and own account workers	410	16.4
5. Lower supervisory and technical occupations	142	5.7
6. Semi-routine occupations	256	10.2
7. Routine occupations	185	7.4
8. Never worked and long-term unemployed	53	2.1
L14.1 Never worked	32	1.3
L14.2 Long-term unemployed	21	0.8
Not classified	122	4.9
L15 Full-time students	122	4.9
L17 Not classifiable for other reasons	0	0.0

In order to protect against disclosure of personal information, records have been swapped between different geographic areas. Some counts will be affected, particularly small counts at the lowest geographies

Source: ONS - 2011 Census (KS611EW)

NS-SeC - males

	Persons	
	Arundel Parish	
	count	%
All usual residents aged 16 to 74	1,212	100.0
1. Higher managerial, administrative and professional occupations	253	20.9
1.1 Large employers and higher managerial and administrative occupations	68	5.6
1.2 Higher professional occupations	185	15.3
2. Lower managerial, administrative and professional occupations	260	21.5
3. Intermediate occupations	53	4.4
4. Small employers and own account workers	272	22.4
5. Lower supervisory and technical occupations	98	8.1
6. Semi-routine occupations	93	7.7
7. Routine occupations	100	8.3
8. Never worked and long-term unemployed	22	1.8
L14.1 Never worked	12	1.0
L14.2 Long-term unemployed	10	0.8
Not classified	61	5.0
L15 Full-time students	61	5.0
L17 Not classifiable for other reasons	0	0.0

In order to protect against disclosure of personal information, records have been swapped between different geographic areas. Some counts will be affected, particularly small counts at the lowest geographies

Source: ONS - 2011 Census (KS612EW)

NS-SeC - females

	Persons	
	Arundel Parish	
	count	%
All usual residents aged 16 to 74	1,286	100.0
1. Higher managerial, administrative and professional occupations	127	9.9
1.1 Large employers and higher managerial and administrative occupations	36	2.8
1.2 Higher professional occupations	91	7.1
2. Lower managerial, administrative and professional occupations	409	31.8
3. Intermediate occupations	228	17.7
4. Small employers and own account workers	138	10.7
5. Lower supervisory and technical occupations	44	3.4
6. Semi-routine occupations	163	12.7
7. Routine occupations	85	6.6
8. Never worked and long-term unemployed	31	2.4
L14.1 Never worked	20	1.6
L14.2 Long-term unemployed	11	0.9
Not classified	61	4.7
L15 Full-time students	61	4.7
L17 Not classifiable for other reasons	0	0.0

In order to protect against disclosure of personal information, records have been swapped between different geographic areas. Some counts will be affected, particularly small counts at the lowest geographies

Source: ONS - 2011 Census (KS613EW)

Definitions

General information (applicable to all tables)

Statistical Disclosure Control

In order to protect against disclosure of personal information from the 2011 Census, there has been swapping of records in the Census database between different geographic areas, and so some counts will be affected. In the main, the greatest effects will be at the lowest geographies, since the record swapping is targeted towards those households with unusual characteristics in small areas. More details on the ONS Census disclosure control strategy may be found on the [Statistical Disclosure Control \(opens in new window\)](#) page on the ONS web site.

Contact details

Name	Census
Telephone	01329 444 972
Web site	http://www.ons.gov.uk/census (opens in new window)
Email	census.customerservices@ons.gov.uk

Usual resident population

Sex

Sex is the classification of a person as either male or female.

Household

A household is defined as:

- one person living alone, or
- a group of people (not necessarily related) living at the same address who share cooking facilities and share a living room or sitting room or dining area.

This includes:

- sheltered accommodation units in an establishment where 50 per cent or more have their own kitchens (irrespective of whether there are other communal facilities), and
- all people living in caravans on any type of site that is their usual residence. This will include anyone who has no other usual residence elsewhere in the UK.

A household must contain at least one person whose place of usual residence is at the address. A group of short-term residents living together is not classified as a household, and neither is a group of people at an address where only visitors are staying.

Communal establishments

A communal establishment is an establishment providing managed residential accommodation. 'Managed' in this context means full-time or part-time supervision of the accommodation. Types of communal establishment include:

- Sheltered accommodation units where fewer than 50 per cent of the units in the establishment have their own cooking facilities, or similar accommodation where residents have their own rooms, but the main meal is provided. If half or more possess their own facilities for cooking (regardless of use) all units in the whole establishment are treated as separate households.

- Small hotels, guest houses, bed & breakfasts and inns and pubs with residential accommodation with room for 10 or more guests (excluding the owner/manager and his/her family).
- All accommodation provided solely for students (during term-time). This includes university-owned cluster flats, houses and apartments located within student villages, and similar accommodation owned by a private company and provided solely for students (University owned student houses that were difficult to identify and not clearly located with other student residences are treated as households, and houses rented to students by private landlords are also treated as households). Accommodation available only to students may include a small number of care-taking or maintenance staff, or academic staff.
- Accommodation available only to nurses. This includes cluster flats and similar accommodation, provided solely for nurses. Nurses' accommodation on a hospital site that does not also contain patients is treated as a separate communal establishment from the hospital (and not categorised as a hospital), so that nurses are treated as 'residents' and not 'resident staff' or 'patients'. This ensures consistency with similar nurses' accommodation not on a hospital site.

Schoolchildren and full-time students

Schoolchildren and students in full-time education studying away from their family home are treated as usually resident at their term-time address. Basic demographic information only (name, sex, age, marital status and relationship) is collected at their non term-time address (their 'home' or 'vacation' address).

The information on families, household size and household composition for their non term-time address does not include them.

Area

For area measurements, census statistics use Standard Area Measurements (SAM), created by ONS Geography for key geographies in the UK using standard methodologies. SAMs are land measurement figures defined by topographic boundaries (coastline and inland water) as at the end of 2011.

Area measurements are in hectares - the metric unit of area defined as 10,000 square metres or approximately 2.47 acres - there are 100 hectares in 1 km².

Each area measurement used in census results is calculated by aggregating the SAM (measured to two decimal places) for each output area that has been best-fitted to each higher area.

Age structure

Age

Age is derived from the date of birth question and is a person's age at their last birthday, at 27 March 2011. Dates of birth that imply an age over 115 are treated as invalid and the person's age is imputed. Infants less than one year old are classified as 0 years of age.

Marital and civil partnership status

Marital and civil partnership status

Marital and civil partnership status classifies an individual according to their legal marital or registered same-sex civil partnership status as at census day, 27 March 2011.

This topic is the equivalent of the 2001 Census topic 'Marital status', but has undergone significant revision to take account of the Civil Partnership Act which came into force on 5 December 2005.

Marital and civil partnership states include:

- married/in a registered same-sex civil partnership,
- separated (but still legally married/in a registered same-sex civil partnership),

- divorced/formerly in a registered same-sex civil partnership, or
- widowed/surviving same-sex civil partner.

Although the term 'single' is widely used to cover people in a number of states such as divorced or separated it is not a legally recognised status and was not an option on the census questionnaire. In census results the term 'single' is used to refer only to someone who has never been married or in a registered same-sex civil partnership, which were options on the census questionnaire.

Living arrangements

Living arrangements

The living arrangements classification combines responses to the question on marital and civil partnership status with information about whether or not a person is living in a couple. This topic is only applicable to people in households. Living arrangements differs from marital and civil partnership status because cohabiting takes priority over other categories. For example, if a person is divorced and cohabiting, then in results for living arrangements they are classified as cohabiting.

Ethnic group

Ethnic group

Ethnic group classifies people according to their own perceived ethnic group and cultural background.

Country of birth

Country of birth

Country of birth is the country in which a person was born. The country of birth question included six tick box responses - one for each of the four parts of the UK, one for the Republic of Ireland, and one for 'Elsewhere'. Where a person ticked 'Elsewhere', they were asked to write in the current name of the country in which they were born. Responses are assigned codes based on the National Statistics Country Classification.

The grouping of countries within the classification is broadly regional, but takes into account the grouping of European Union (EU) countries. Countries in the EU are grouped into those that were EU members in March 2001, and those that became members (Accession countries) between April 2001 and March 2011 as part of the EU enlargement process.

Household language

Proficiency in English language

Proficiency in English language classifies people whose main language is not English (or not English or Welsh in Wales) according to their ability to speak English. A person is classified in one of the categories:

- can speak English very well,
- can speak English well,
- cannot speak English well, or
- cannot speak English.

Religion

The voluntary question on religion in the 2011 Census was intended to capture people's religious affiliation and identification at the time of the Census irrespective of whether they practised or

believed in that religion or how important it was in their lives. If a person had no religion then the first of a series of tick boxes could be selected. Care should be taken when using these data not to infer, or allow the inference by others, that the practice of a religion or specific religious activities that are expected of believers has been measured. Unlike other census questions where missing answers are imputed, this question was voluntary, and where no answer was provided the response is categorised as 'not stated'.

Due to an error in the processing of census data, the number of usual residents in the 'Religion not stated' category has been overestimated by a total of 62,000 for three local authorities: Camden, Islington and Tower Hamlets. More information from the Census issues and corrections (opens in new window) page.

Health and provision of unpaid Care

Long-term health problem or disability

A long-term health problem or disability that limits a person's day-to-day activities, and has lasted, or is expected to last, at least 12 months. This includes problems that are related to old age. People were asked to assess whether their daily activities were limited a lot or a little by such a health problem, or whether their daily activities were not limited at all.

General Health

General health is a self-assessment of a person's general state of health. People were asked to assess whether their health was very good, good, fair, bad or very bad. This assessment is not based on a person's health over any specified period of time.

Provision of unpaid care

A person is a provider of unpaid care if they look after or give help or support to family members, friends, neighbours or others because of long-term physical or mental ill health or disability, or problems related to old age. This does not include any activities as part of paid employment. No distinction is made about whether any care that a person provides is within their own household or outside of the household, so no explicit link can be made about whether the care provided is for a person within the household who has poor general health or a long-term health problem or disability.

Dwellings, household spaces and accommodation type

Number of household spaces in shared dwellings

A household space is the accommodation used or available for use by an individual household. Household spaces are identified separately in census results as those with at least one usual resident, and those that do not have any usual residents.

A household space with no usual residents may still be used by short-term residents, visitors who were present on census night, or a combination of short-term residents and visitors.

Vacant household spaces, and household spaces that are used as second addresses, are also classified in census results as 'household spaces with no usual residents'.

A dwelling is shared if:

- the household spaces it contains have the accommodation type 'part of a converted or shared house',
- not all of the rooms (including kitchen, bathroom and toilet, if any) are behind a door that only that household can use, and
- there is at least one other such household space at the same address with which it can be combined to form the shared dwelling

Tenure

Tenure

Tenure provides information about whether a household rents or owns the accommodation that it occupies and, if rented, combines this with information about the type of landlord who owns or manages the accommodation.

Rooms, bedrooms and central heating

Central heating (variable)

A household's accommodation is classified as having central heating if it is present in some or all rooms (whether used or not). Central heating is classified by type, as shown in the classification table. Other central heating includes solar, liquefied petroleum gas (LPG) or other bottled gas. This information is not available for household spaces with no usual residents.

Car or van availability

Cars or vans in household

This applies to the number of cars or vans that are owned, or available for use, by one or more members of a household. This includes company cars and vans that are available for private use. It does not include motorbikes or scooters, or any cars or vans belonging to visitors. The count of cars or vans in an area relates only to households. Cars or vans used by residents of communal establishments are not counted.

Households with 10 to 20 cars or vans are counted as having only 10. Responses indicating a number of cars or vans greater than 20 were treated as invalid and a value was imputed.

Household composition

Household composition

Household composition classifies households according to the relationships between the household members. Households consisting of one family and no other usual residents are classified according to the type of family (married, same-sex civil partnership or cohabiting couple family, or lone parent family) and the number of dependent children. Other households are classified by the number of people, the number of dependent children, or whether the household consists only of students or only of people aged 65 and over.

This definition is used in most results from the 2011 Census. In a small number of results an alternative classification is used that defines households by the age of the household members. It takes no account of the relationships between them. In results where this different definition is used it is clearly indicated.

Economic activity

Economic activity

Economic activity relates to whether or not a person who was working or looking for work in the week before census.

Rather than a simple indicator of whether or not someone was currently in employment, it provides a measure of whether or not a person was an active participant in the labour market.

A person's economic activity is derived from their 'Activity last week'. This is an indicator of their status or availability for employment - whether employed, actively looking for work, waiting to start a new job, available to start a new job, or their status if not employed or not seeking employment. Additional information included in the economic activity classification is also derived from information about the number of hours a person works and their type of employment - whether employed or self-

employed.

The census concept of economic activity is compatible with the standard for economic status defined by the International Labour Organisation (ILO). It is one of a number of definitions used internationally to produce accurate and comparable statistics on employment, unemployment and economic status.

Economic activity - males

Economic activity

Economic activity relates to whether or not a person who was working or looking for work in the week before census.

Rather than a simple indicator of whether or not someone was currently in employment, it provides a measure of whether or not a person was an active participant in the labour market.

A person's economic activity is derived from their 'Activity last week'. This is an indicator of their status or availability for employment - whether employed, actively looking for work, waiting to start a new job, available to start a new job, or their status if not employed or not seeking employment. Additional information included in the economic activity classification is also derived from information about the number of hours a person works and their type of employment - whether employed or self-employed.

The census concept of economic activity is compatible with the standard for economic status defined by the International Labour Organisation (ILO). It is one of a number of definitions used internationally to produce accurate and comparable statistics on employment, unemployment and economic status.

Economic activity - females

Economic activity

Economic activity relates to whether or not a person who was working or looking for work in the week before census.

Rather than a simple indicator of whether or not someone was currently in employment, it provides a measure of whether or not a person was an active participant in the labour market.

A person's economic activity is derived from their 'Activity last week'. This is an indicator of their status or availability for employment - whether employed, actively looking for work, waiting to start a new job, available to start a new job, or their status if not employed or not seeking employment. Additional information included in the economic activity classification is also derived from information about the number of hours a person works and their type of employment - whether employed or self-employed.

The census concept of economic activity is compatible with the standard for economic status defined by the International Labour Organisation (ILO). It is one of a number of definitions used internationally to produce accurate and comparable statistics on employment, unemployment and economic status.

Hours worked

Hours worked

number of hours that a person in employment in the week before the census, worked in their main job. This includes paid and unpaid overtime.

Industry

Industry

The industry in which a person works relates to their main job, and is derived from information provided on the main activity of their employer or business. This is used to assign responses to an industry code based on the Standard Industrial Classification 2007.

Industry - males

Industry

The industry in which a person works relates to their main job, and is derived from information provided on the main activity of their employer or business. This is used to assign responses to an industry code based on the Standard Industrial Classification 2007.

Industry - females

Industry

The industry in which a person works relates to their main job, and is derived from information provided on the main activity of their employer or business. This is used to assign responses to an industry code based on the Standard Industrial Classification 2007.

Occupation

Occupation

A person's occupation relates to their main job and is derived from either their job title or details of the activities involved in their job. This is used to assign responses to an occupation code based on the Standard Occupational Classification 2010 (SOC2010).

Occupation - Major group

'Major group' refers to the categories at the highest level of the hierarchy of occupations.

Occupation - males

Occupation

A person's occupation relates to their main job and is derived from either their job title or details of the activities involved in their job. This is used to assign responses to an occupation code based on the Standard Occupational Classification 2010 (SOC2010).

Occupation - Major group

'Major group' refers to the categories at the highest level of the hierarchy of occupations.

Occupation - females

Occupation

A person's occupation relates to their main job and is derived from either their job title or details of the activities involved in their job. This is used to assign responses to an occupation code based on the Standard Occupational Classification 2010 (SOC2010).

Occupation - Major group

'Major group' refers to the categories at the highest level of the hierarchy of occupations.

NS-SeC

NS-SeC

The National Statistics Socio-economic Classification (NS-SEC) provides an indication of socioeconomic position based on occupation. It is an Office for National Statistics standard classification. To assign a person to an NS-SEC category their occupation title is combined with information about their employment status, whether they are employed or self-employed, and whether or not they supervise other employees. Full-time students are recorded in the 'full-time students' category regardless of whether they are economically active or not.

The rebased version of NS-SEC used in census results uses occupation coded to SOC2010. More information about NS-SEC:

<http://ons.gov.uk/ons/guide-method/classifications/current-standard-classifications/soc2010/soc2010-volume-3-ns-sec--rebased-on-soc2010--user-manual/index.html> (opens in new window)

In 2011 Census results, because the census did not ask a question about the number of employees at a person's workplace, the reduced method of deriving NS-SEC (which does not require this information) is used.

NS-SeC - males

NS-SeC

The National Statistics Socio-economic Classification (NS-SEC) provides an indication of socioeconomic position based on occupation. It is an Office for National Statistics standard classification. To assign a person to an NS-SEC category their occupation title is combined with information about their employment status, whether they are employed or self-employed, and whether or not they supervise other employees. Full-time students are recorded in the 'full-time students' category regardless of whether they are economically active or not.

The rebased version of NS-SEC used in census results uses occupation coded to SOC2010. More information about NS-SEC:

<http://ons.gov.uk/ons/guide-method/classifications/current-standard-classifications/soc2010/soc2010-volume-3-ns-sec--rebased-on-soc2010--user-manual/index.html> (opens in new window)

In 2011 Census results, because the census did not ask a question about the number of employees at a person's workplace, the reduced method of deriving NS-SEC (which does not require this information) is used.

NS-SeC - females

NS-SeC

The National Statistics Socio-economic Classification (NS-SEC) provides an indication of socioeconomic position based on occupation. It is an Office for National Statistics standard classification. To assign a person to an NS-SEC category their occupation title is combined with information about their employment status, whether they are employed or self-employed, and whether or not they supervise other employees. Full-time students are recorded in the 'full-time students' category regardless of whether they are economically active or not.

The rebased version of NS-SEC used in census results uses occupation coded to SOC2010. More information about NS-SEC:

<http://ons.gov.uk/ons/guide-method/classifications/current-standard-classifications/soc2010/soc2010-volume-3-ns-sec--rebased-on-soc2010--user-manual/index.html> (opens in new window)

In 2011 Census results, because the census did not ask a question about the number of employees at

a person's workplace, the reduced method of deriving NS-SEC (which does not require this information) is used.